

LIFE/work balance

# CLASSROOM *Secrets*

## #LIFEworkbalance

We have started a #LIFEworkbalance campaign and we need your help to complete our LIFE/work balance survey.

We hope to publish the results soon, so please give 15 minutes of your time to help us get a true picture of school life.

Want to be a part of this campaign? Take the [survey](#) on our website and share it with your colleagues!

## Year 1 – Summer Block 2 – Singular and Plural – Single Nouns

### About This Resource:

This PowerPoint has been designed to support your teaching of this small step. It includes a starter activity and an example of each question from the Varied Fluency and Application and Reasoning resources also provided in this pack. You can choose to work through all examples provided or a selection of them depending on the needs of your class.

### National Curriculum Objectives:

English Year 1: (1G6.3) Regular plural noun suffixes –s or –es [for example, dog, dogs; wish, wishes], including the effects of these suffixes on the meaning of the noun

Terminology for pupils:

- (1G6.3) singular
- (1G6.3) plural

[More resources](#) from our Grammar, Punctuation and Spelling scheme of work.

Did you like this resource? Don't forget to [review](#) it on our website.

## Year 1 – Summer Block 2 – Singular and Plural – Single Nouns

### Notes and Guidance

- Children should have an understanding of nouns from work done in previous blocks using capital letters for names, people, places, days and months.
- In this step, children will learn that a singular noun is a word used to name a person, place or object and is used to describe only one of these, for example: *chair, mum, bathroom*.
- Children will identify singular nouns and practise using these in their writing with some pictorial support.

### Focused Questions

- Match the image to the correct word.
- Which words are nouns?

# Step 1: Single Nouns

## Introduction

Which words need a capital letter?

jill

egg

june

thursday

london

moon

Why?



## Introduction

Which words need a capital letter?

**Jill**

egg

**June**

**Thursday**

**London**

moon

Why?

The names of people, places, days and months need a capital letter.

Varied Fluency 1

Circle the nouns below.

**were**

**lolly**

**spoon**

**lamp**

**train**

**like**

Varied Fluency 1

Circle the nouns below.

were

**lolly**

**spoon**

**lamp**

**train**

like



## Varied Fluency 2

Match the picture to the noun.



**sock**

**soil**

**duck**

## Varied Fluency 2

Match the picture to the noun.



sock

soil

duck

### Varied Fluency 3

Sort the nouns into the table.

Day	Month	Name

**Mark**

**Tuesday**

**October**

**Sally**

**November**

**Sunday**

### Varied Fluency 3

Sort the nouns into the table.

Day	Month	Name
Tuesday	October	Mark
Sunday	November	Sally

Mark

Tuesday

October

Sally

November

Sunday

## Application 1

**Write down 3 nouns that you can see in the picture.**



## Application 1

**Write down 3 nouns that you can see in the picture.**



**Various answers, for example:**

**farmer  
fork  
corn  
hat  
cow  
grass  
sky  
cloud**



## Application 2

Add nouns to the sentence below.

The \_\_\_\_\_ hopped across  
the \_\_\_\_\_.

grass

train

rabbit

## Application 2

Add nouns to the sentence below.

The rabbit hopped across the grass.

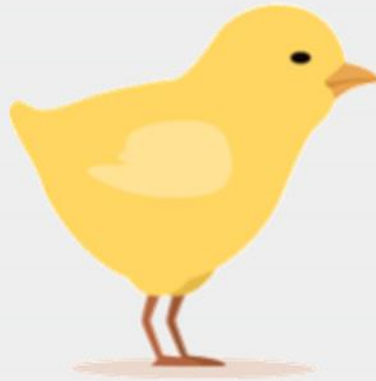
grass

train

rabbit

## Reasoning 1

**What is wrong with the noun under the picture?**



**chicks**

**Explain your answer.**

## Reasoning 1

**What is wrong with the noun under the picture?**



**chicks**

**Explain your answer.  
The noun is wrong because...**

## Reasoning 1

What is wrong with the noun under the picture?



**chicks**

**Explain your answer.**

**The noun is wrong because there is only one chick.**